

REVISION	DESCRIPTION	DATE
1	DRAFT	

NOTES:

1. PLUG UNUSED RETURN PORT BEFORE OPERATION.

- 2.** ITEM 5 COMES PREINSTALLED. ITEM 5 IS A FIXED SETTING RELIEF VALVE

3. LASER MARKING REQUIREMENTS:  
MODEL NUMBER  
SERIAL NUMBER  
DATE CODE "YY" + W + "WW"  
FOR EXAMPLE 22W01 FOR THE FIRST WEEK OF 2022

4. CUSTOMER PART NUMBER :

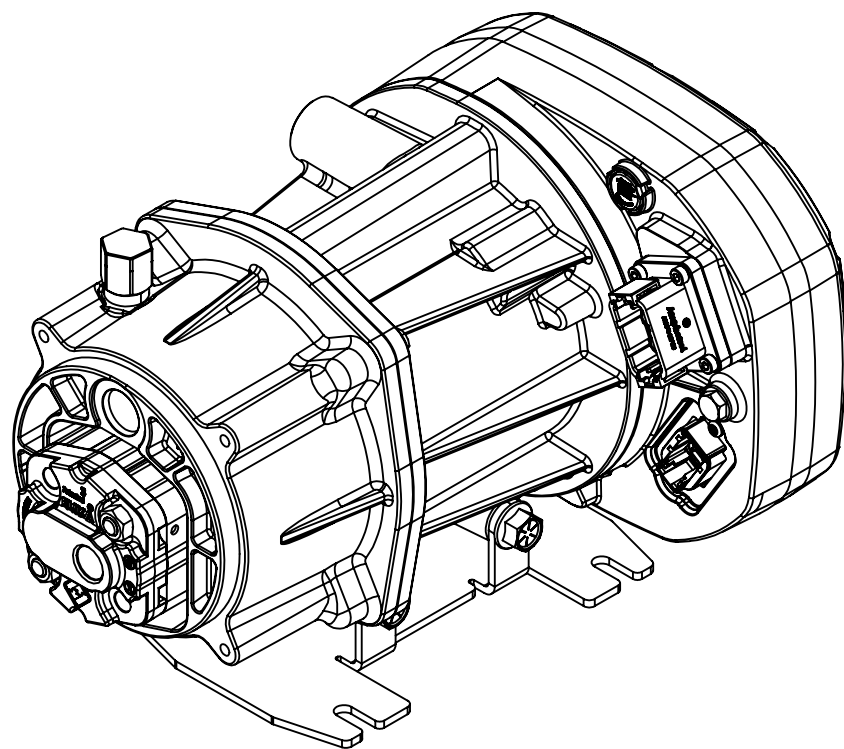
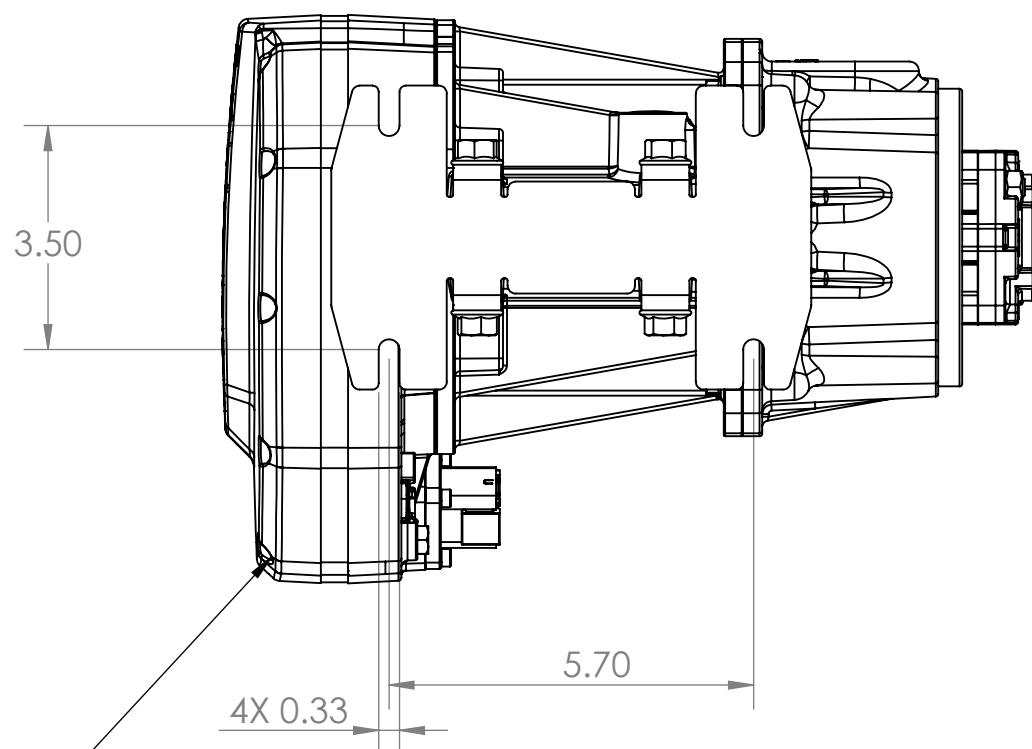
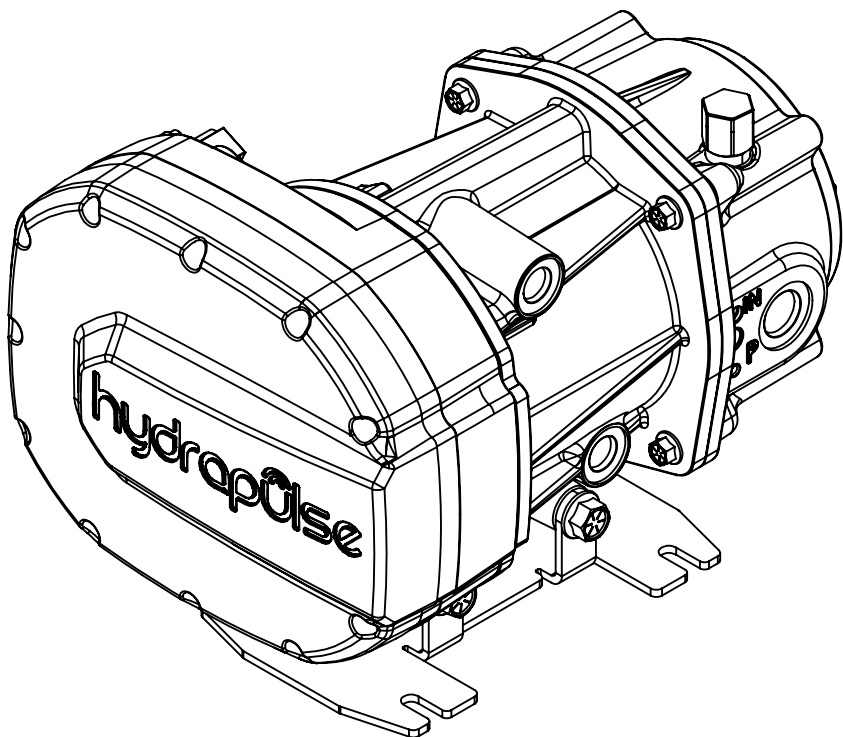
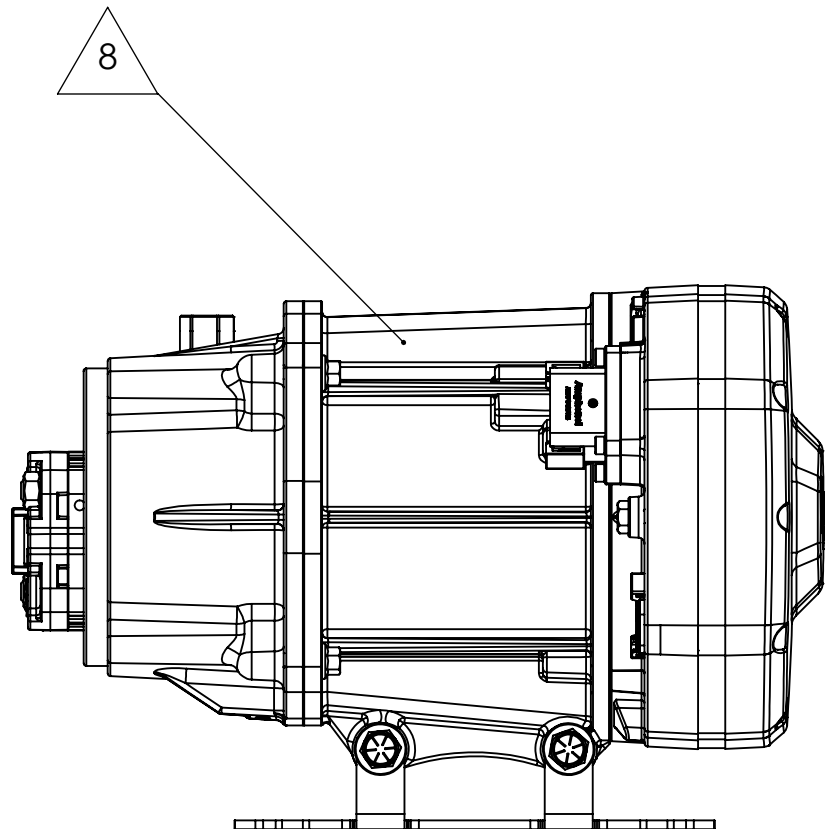
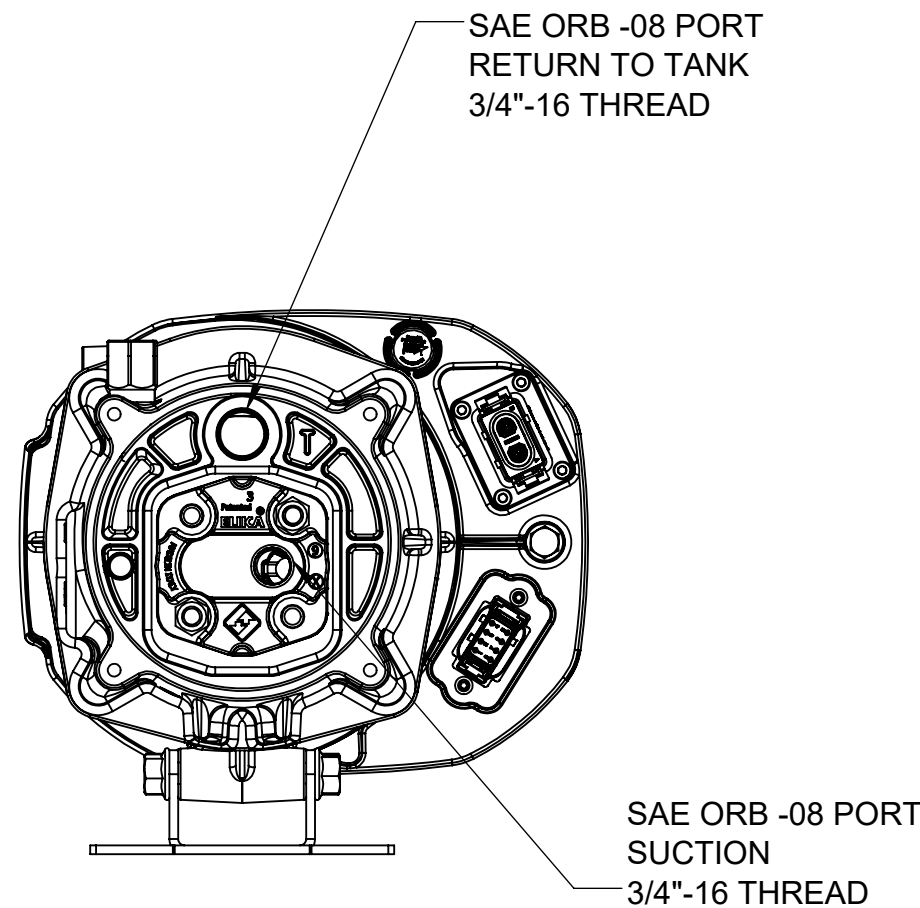
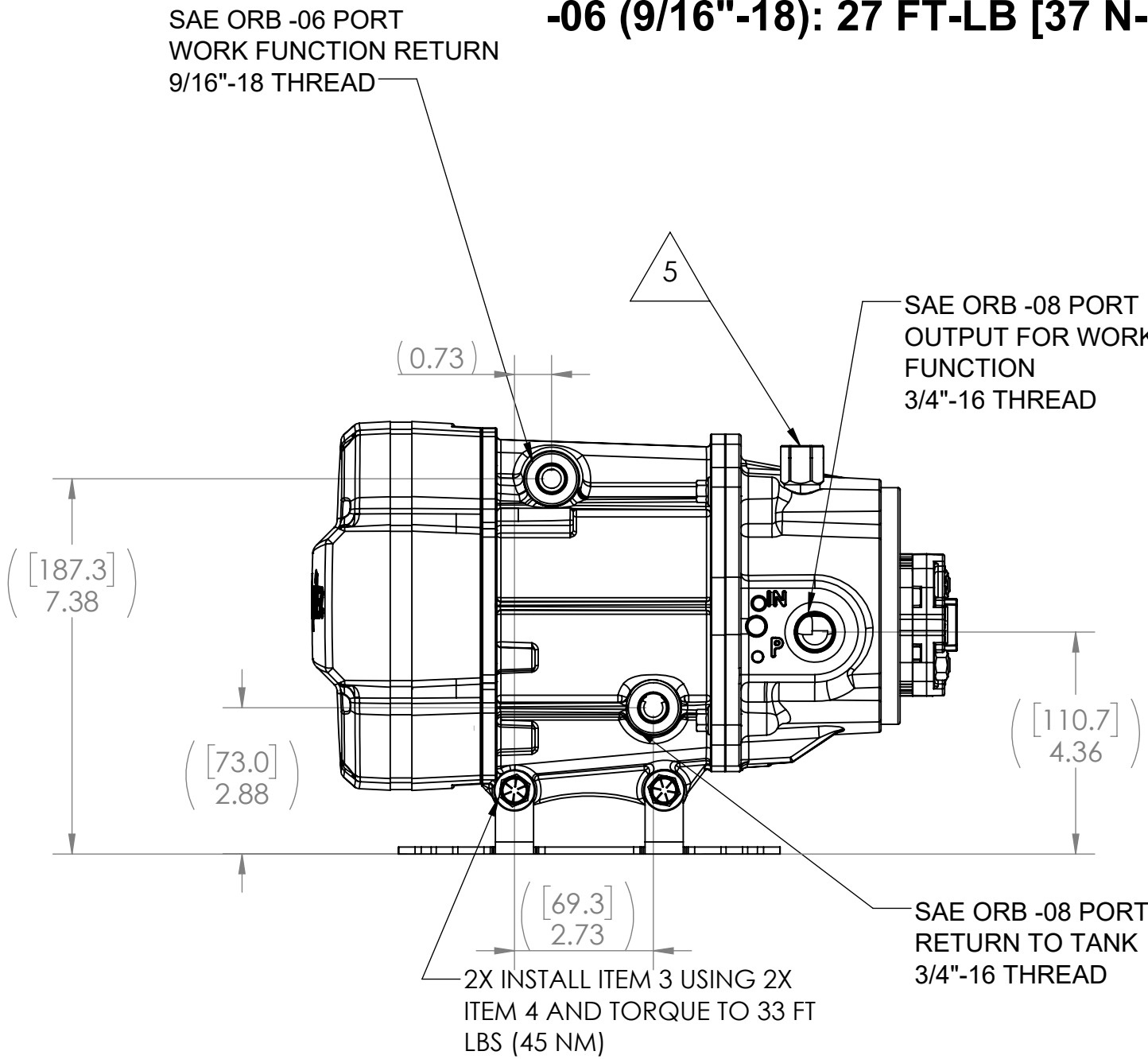
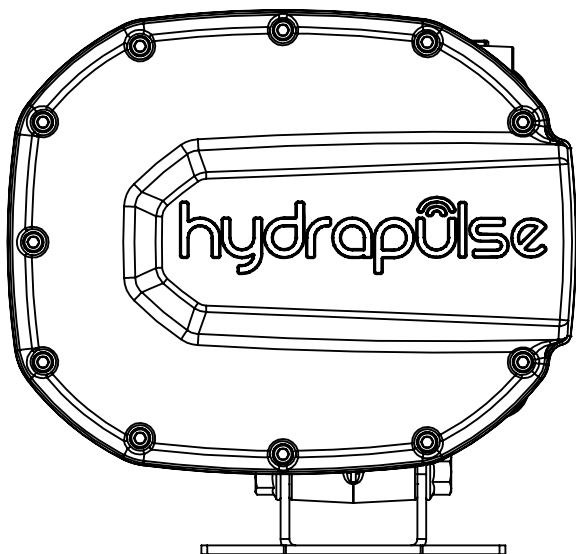
5. FUNCTION AND CONTROLS SPECIFICATION AS PER HYDRAPULSE\_USER\_MANUAL

6. ELECTRICAL CONNECTORS/TERMINATION PER TABLE BELOW

7. APPLY WARNING LABEL TO CLEAN, DRY SURFACE IN LOCATION SHOWN

8. ACCEPTABLE MOUNTING ORIENTATION

9. REFERENCE CAD MODEL FOR DIMENSIONS NOT INCLUDED ON DRAWING



HIGH VOLTAGE CONNECTOR, AMPHENOL ATHP042P25	
PIN	LABEL
A	BATT +
B	BATT -
N/A	HVIL +
N/A	HVIL -

PIN	LABEL
1	VCC
2	GND
3	CAN-H
4	CAN-L
5	STO-0
6	STO-1
7	HVIL-0
8	HVIL-1

PERFORMANCE SPECIFICATIONS	
CONTINUOUS RATED PRESSURE	1300 PSI
PEAK RATED PRESSURE	2000 PSI
RATED SPEED	4000 RPM
FLOWRATE (2000 RPM)	4.2 GPM

ITEM NO.	PART NUMBER	DESCRIPTION	QTY.
1	016-00322	EHSU-1 DRIVE SIDE	1
2	500-10357	EHSU-1 MOUNTING BRACKET	1
3	500-00467	3/8-16 x 3/4 hex head bolt	4
4	016-00568	4CC HELICAL PUMP	1
5	500-00476	T-162A Relief Valve	1

UNLESS OTHERWISE SPECIFIED		CONTRACT		<div>TERZO</div> <div>TITLE</div> <div>2.5 KW EHSU – QUIET</div>			
- INTERPRET PER ASME Y14.5M-1994 - DIMENSIONS ARE IN INCHES [MM] - DO NOT SCALE DRAWING		STATUS					
TOLERANCES ON:		DRAFT					
FRACTIONAL: 1/64		DRAWN KSTAEBLER		DATE 230113			
		CHECKED		DATE			
THIRD ANGLE PROJECTION		ENGR. AGOMEZ		DATE 211022			
		APPROVED		DATE		SIZE   CAGE CODE   DWG NO	
		APPROVED		DATE		REV	
NEXT ASSY		USED ON		SCALE   1:3		WEIGHT   SHEET   1 OF 1	
						D EHSU-1-56-350-U-4-QUIET   1	

THIS DOCUMENT CONTAINS PROPRIETARY INFORMATION AND EXCEPT WITH WRITTEN PERMISSION OF TERZO POWER SYSTEMS SUCH INFORMATION SHALL NOT BE PUBLISHED OR DISCLOSED TO OTHERS, OR USED FOR ANY PURPOSE AND THE DOCUMENT SHALL NOT BE COPIED IN WHOLE OR IN PART.